

Changing the gameplan for cancer patients

BioReperia is a privately-owned cancer diagnostics company based on technology developed at Linköping University in Sweden. The technology is used to accelerate drug discovery and in precision medicine to test individual treatments on patients.

ZTX®
Finds the most effective treatments for each cancer patient within 5 days.

BioReperia offers the best possible treatment for each patient. By improving the cost effectiveness of modern anticancer therapies, the company is setting a new standard in companion diagnostics of cancer.

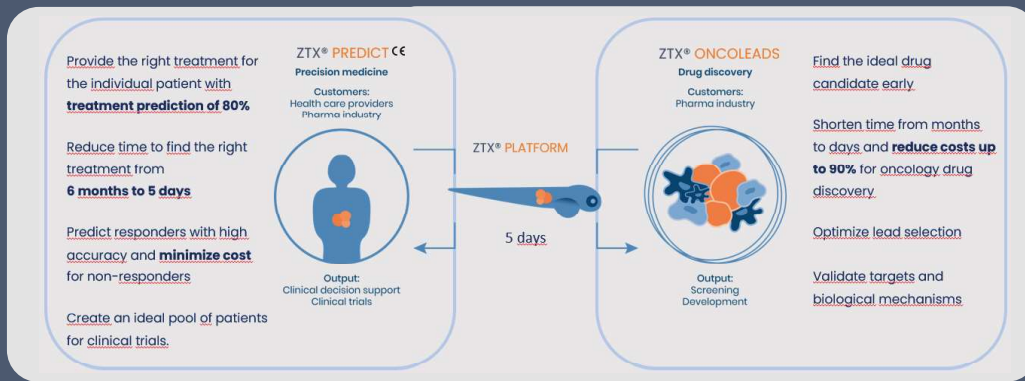
BioReperia's vision is to radically reduce cancer mortality

One platform multiple purposes

The business model of the proprietary ZTX® PREDICT platform includes algorithms to analyze tumor regression and metastatic dissemination in all solid cancers, providing clinical decision support for treatment planning in individual patients and patient stratification for clinical trials.

ZTX® platform targets two markets. In addition to healthcare and clinical support, the pharma industry can use the test in clinical trials and for pharmaceutical development. Although these markets target two different customer segments, they are closely connected.

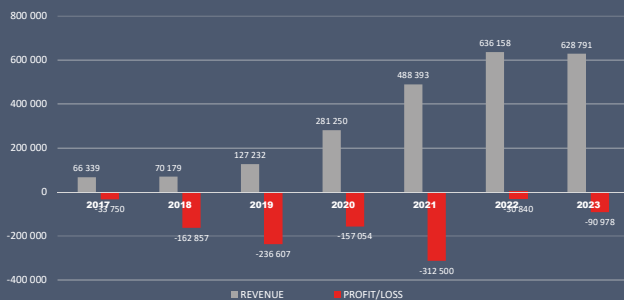
The Zebrafish Tumor Xenograft Platform is a breakthrough technology within oncology - ZTX® Predict, and for drug discovery and development - ZTX® Oncoleads.



A fast growing business

ZTX® Oncoleads services have already been sold to 72 customers and ZTX® Predict to 5 customers with a total of 88 orders.

Figures in the chart is in EUR

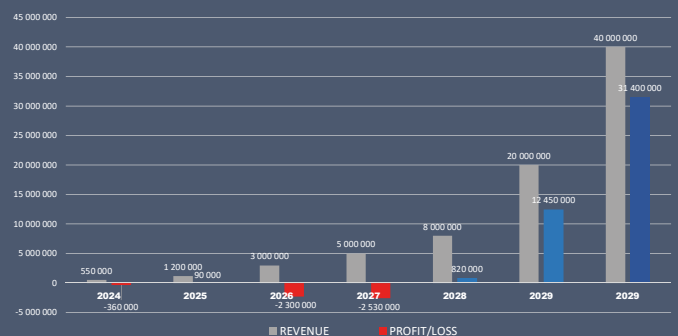


The key to scale up the company

The CE mark of the ZTX® Predict is one of the main reasons why BioReperia will be able to scale up the operations. Other is the robotics automation that increases the capacity of the production.

But the market, where more than 20 million new cancer patients are diagnosed yearly, and more than 10 million die from their disease is the reason for BioReperia's vision: **to radically reduce cancer mortality.**

BioReperia will reach the majority of cancer clinics and Pharma industries. Figures in the chart below is in EUR.



Milestones for the years to come

	2024	2025	2026	2027	2028	2030
Stakeholder Objectives	Launch	Expansion	Biomarker tool used in clinic	FDA approval	Implementation US Hospitals	Top 10 of most prevalent solid cancer diagnosis
	2 hospitals 5 Pharma Companies 50 samples	5 hospitals 50 patients 100 pharma samples 200 pharma samples	10 hospitals 200 patients 100 companion diagnostics 200 pharma samples	15 hospitals 500 patients 500 companion diagnostics 500 Pharma samples	30 hospitals 1000 patients 1500 companion diagnostics 1000 Pharma samples	CPI for 5 diagnoses 10 000 samples a year
Technical development		Handle diagnoses	Imaging automation implementation	Implemented automation to increase capacity	Implemented robotic production line to increase capacity	
Market	Clinical West Europe Pre-clinical/ pharma Europe, US, Asia (South Korea) (Japan)	Clinical West Europe, Middle East Pre-clinical/ Pharma: Europe, US and Asia	Prepare for market entry in US Licensing agreement in place with 3 partners	Licensing ZTX to Partnership CROs US sales office Marketing US Staff	Implement PREDICT X (FDA, CE, IVDR)	Licensing to hospitals



Most innovative CRO 2022
Healthcare & Pharmaceutical awards

Top 12 innovations of 2021
EU Commission

Top 50 future companies
Teach Arena Foundation



You can read more about us at bioreperia.com or contact us at info@bioreperia.com